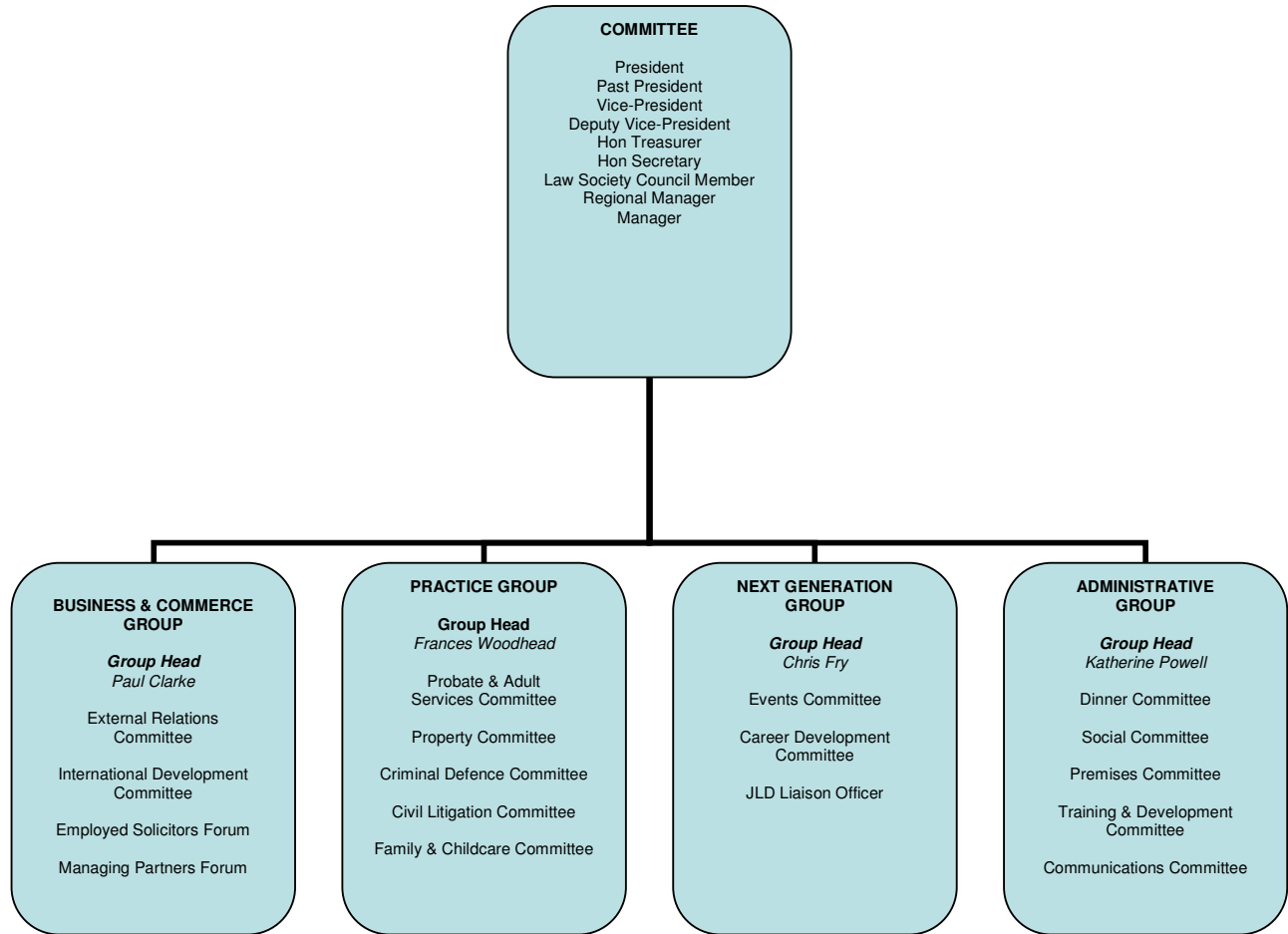


Sheffield & District Law Society – Management Structure



| Business & Commerce Group - Group Head - Paul Clarke | | | |
|------------------------------------------------------|---------------------------------------|---------------------------|---------------------------------------|
| External Relations Focus Group | International Development Focus Group | Employed Solicitors Forum | Managing Partners Forum |
| Jay Bhayani (chair) | Giles Searby | Frances Woodhead (Chair) | Paul Clarke (Chair) |
| Chris Fry | Peter Wright | Steve Eccleston | Fiona Tatton |
| Michael Peacock | Chris Fry | Theresa Searl | Managing Partners of various law firm |
| Peter Crawford | Fiona Tatton | Sarah Westwood | |

Practice Group - Group Head - Frances Woodhead

| Probate & Care of Elderly Focus Group | Property Focus Group | Criminal Defense Focus Group | Litigation Focus Group | Family and Adult Services Focus Group |
|---------------------------------------|----------------------------|------------------------------|-------------------------|---------------------------------------|
| Katey Maybury (Chair) | Julia Watkinson (Chair) | Dan Stowers (Chair) | Holly Dobson (Chair) | Paul Szabo (Chair) |
| Hannah McDermott | Nick Tudor | Fiona Swain | Giles Searby | Melanie Hadwin |
| Nichola Barnes | Jeffrey Shaw | Graeme Rothwell | Paul Clarke | Pat Lennon |
| Vinny Jethwa | Lee Kent | | Michael Peacock | |

ext Generation Group – Group - Head Chris Fry

| Steering Group | Events | Special Projects | Training & Development |
|------------------|----------------|-----------------------|------------------------|
| Chris Fry | Kevin Poulter | Heidi Cotton | Helen Keegan |
| Kevin Poulter | Laurinda Bower | Siobhan Howard-Palmer | Anna Deans |
| Laurinda Bower | Lauren Fulcher | Peter Wright | Vinny Jethwa |
| Heidi Cotton | Joe Birkby | | |
| Peter Wright | Angela Sandhal | | |
| Heather Maitland | | | |
| Chris Simpkins | | | |
| Katherine Powell | | | |
| Fiona Tatton | | | |
| Helen Keegan | | | |
| Anna Deans | | | |
| Andy Young | | | |
| Lauren Fulcher | | | |

Support Group - Group Head - Katherine Powell

| Premises Focus Group | Training & Development Focus Group | Communications Focus Group | Dinner Committee | Social Committee |
|--------------------------|------------------------------------|----------------------------|-------------------------|--------------------|
| Frances Woodhead (Chair) | Nick Tudor (Chair) | Anna Deans (Chair) | Sally Rissbrook (Chair) | Paul Szabo (Chair) |
| Holly Dobson | Dan Stowers | Katherine Powell | Paul Clarke | Melanie Hadwin |
| Nick Tudor | Graeme Rothwell | Julia Baskerville | Anna Deans | Graeme Rothwell |
| Katherine Powell | Katherine Powell | Sally Rissbrook | Katherine Powell | Katherine Powell |
| | | | Melanie Hadwin | Lance Dodgson |